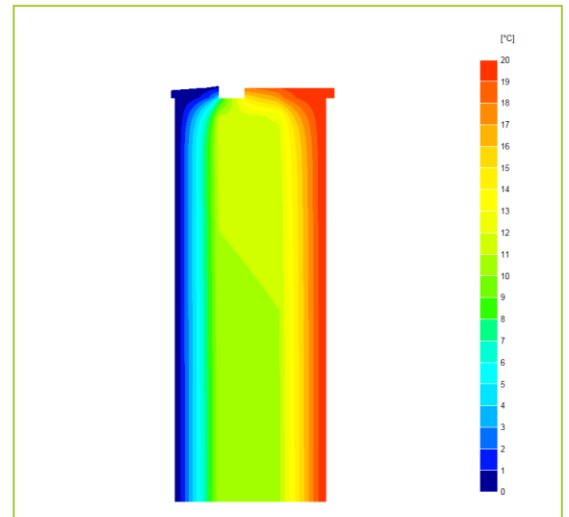
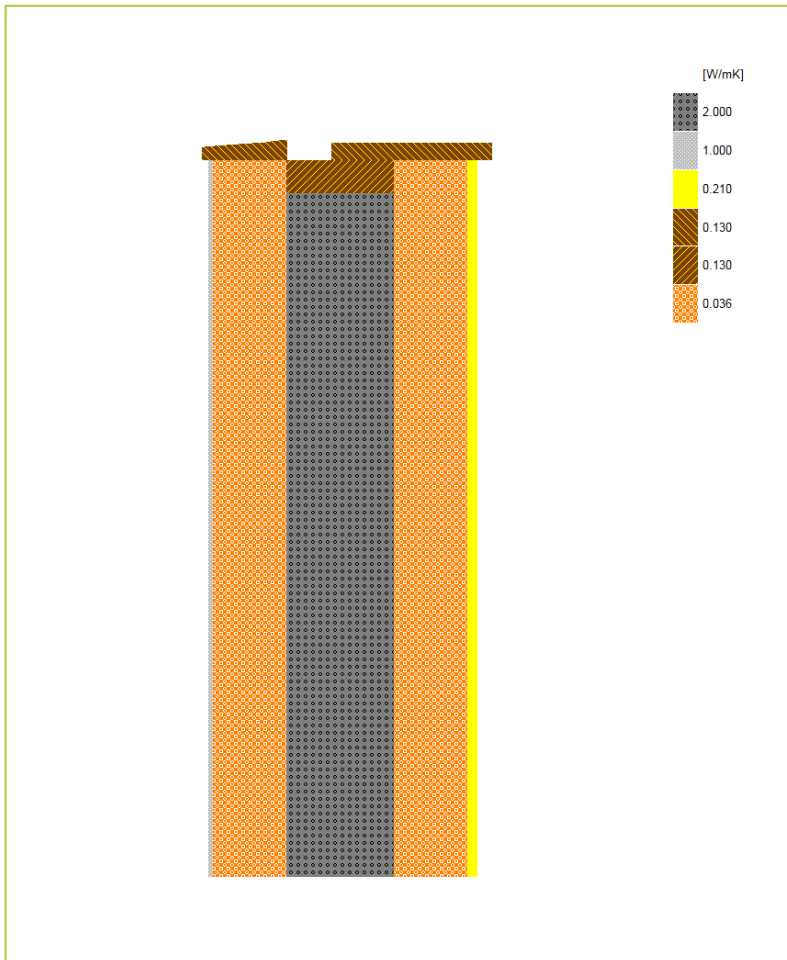


Certificate No:	WRTM – 000066 vs. 0	Issued:	29 August 2019
------------------------	----------------------------	----------------	-----------------------

Issued to: <i>Jean-Marc Bouvier</i> Nudura Corporation International Sales & Field Support Tel: Mob +44 (0) 7766 118711 Email: jmb@nudura.com www.nudura.com	General Construction Specification: (see detail below for full construction)	Main/Load-bearing:	152mm (nominal) Dense Concrete Core, $\lambda \leq 2.50$
		Insulation:	2x 102mm layers of EPS, $\lambda = 0.036$
		Cavity:	15mm Cavity behind Brick if present
			Cladding:
Description:		ICF Wall, Cill, timber reveal closure	
Reference:		E3	Cill, Standard Wall



Temperature Distribution

Linear Thermal Transmittance W/m.K	
$\Psi =$	0.045
Temperature Factor ³ for Humidity and Mould	
$f =$	0.902

Calculation Prepared By: Trefor Jones

- Notes:**
- Ψ and f are only valid for the detail drawn and described above.
 - U-values are within the ranges of; for the flanking walls $U = 0.16 \text{ W/m}^2\cdot\text{K} \pm 10\%$ (external brick with cavity $U = 0.159$, thin render $U = 0.167$).
 - In dwellings UK regulations indicate that a temperature factor f that is >0.75 would avoid the risk of mould. For other nations, jurisdictions and climates, other standards may apply. E.g. 0.65; Switzerland: 0.75; Belgium: 0.7; Germany: 0.7; Finland: 0.87. French, German and other standards often do not indicate a single number for acceptable risk, but are dependent on circumstances.
 - Calculations have been performed in accordance with:
 - EN ISO 10211_2007 (British Standards)
 - IP 1/06 & BR497 (BRE Press)
 and with reference to the following publications:
 - EN ISO 6946 (British Standards)
 - BR443 (BRE Press)